



ARES/RACES

Johnson County - Iowa

Iowa City Amateur Radio Club
05/11/2022

Neil Johnson - NOSFH
Johnson County Emergency Coordinator



Thank you!

Outline

- Mission and Goals
- Difference between ARES and RACES
- Facilities and Equipment
- Membership
- Activities
- CERT
- Questions and Contact Info

Mission

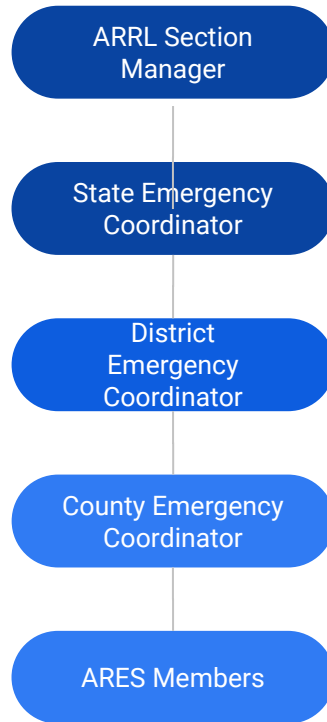
Provide back-up communication
for ***served*** agencies during disasters or
other emergency incidents

Goals

Trained radio operators who know how to deploy quickly, can be effective and efficient net control stations, who have their radio equipment constantly in operating order, who understand Amateur Radio Emergency Service (ARES) protocols, and who understand the Incident Command System (ICS)

Differences between ARES and RACES

- **ARES** - Amateur Radio Emergency Service
 - The Amateur Radio Emergency Service® (ARES) consists of licensed amateurs who have voluntarily registered their qualifications and equipment, with their local ARES leadership, for communications duty in the public service when disaster strikes.



ARES Organization

Differences between ARES and RACES

- **RACES** - Radio Amateur Civil Emergency Service
 - ... a protocol created by the Federal Emergency Management Agency (FEMA) and the Federal Communications Commission (FCC Part 97, Section 407).
 - Activated by local, county and state jurisdictions and are the only Amateur Radio operators authorized to transmit during declared emergencies when the President of the United States specifically invokes the War Powers Act.

Facilities and Equipment

- Emergency Operations Center
 - Equipment - 2 Operating Positions
 - 2 HF Radios
 - VHF/UHF Radio
 - VHF and UHF repeaters (KD0MVJ)
 - Citizen Band Radio
 - Scanner
 - Aviation and Marine Radios (For Receive Only)
 - Digital Capabilities (Signal Link)

Facilities and Equipment

- EOC Antennas

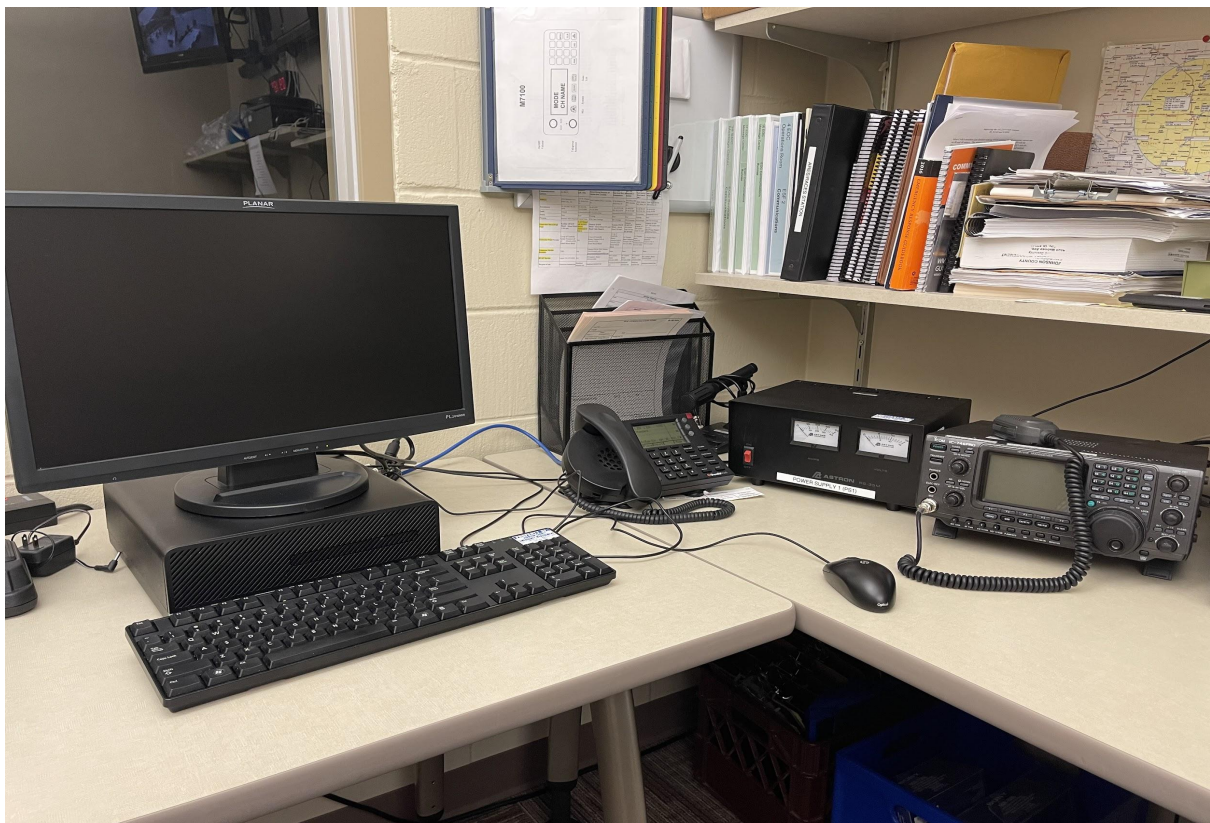
- HF

- Folded Dipole (80 MHz)
 - Civil Air Patrol has priority
 - Unfortunately antenna is currently compromised
 - Portable Military Grade NVIS Antenna

- VHF/UHF Antennas

- VHF Repeater (145.270 MHz, 192.8 Hz)
 - UHF Repeater (442.150 MHz, 192.8 Hz)
 - VHF/UHF Operating





Facilities and Equipment

- Portable Go Kit
 - HF Radio
 - VHF/UHF/DMR Radio
 - Digital Capable (Signal Link)
 - VHF/UHF Antenna
 - Portable NVIS Antenna



Go kit

ARES Membership

- ARRL membership is **not required** (except for leadership).
- No membership requirements to participate in weekly net(s).
- Recommended Training
 - IS-100, 200, 700, 800
 - ARRL EC-001 Introduction to Emergency Communications
 - National Weather Service Storm Spotter Training

ARES Membership

- Deployment by the JC EMA in an emergency and to obtain EOC access privileges **requires:**
 - FEMA classes IS-100, IS-200, IS-700, and IS-800
 - Criminal background check
 - Approval by JC ARES County Emergency Coordinator
 - Approval by the Director of JC EMA (Dave Wilson)

RACES Membership

- Approval by Director of EMA (Dave Wilson)
- Approval by State RACES office (Tom Reis)

FEMA, NRF, NIMS, ICS,? Oh my!

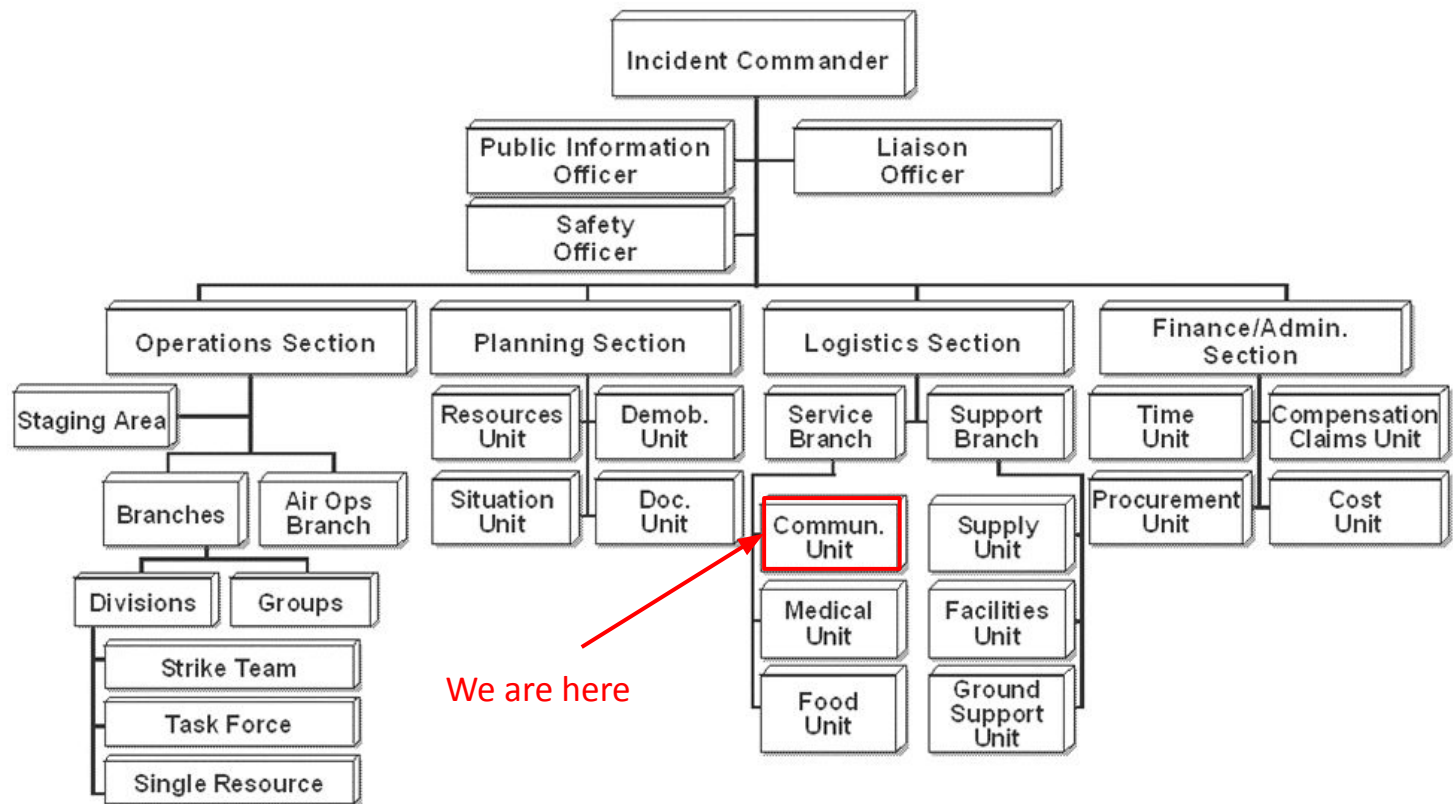
FEMA - Federal Emergency Management Agency

NRF - National Response Framework

NIMS - National Incident Management System

ICS - Incident Command System

Don't let the next slide scare you!



Incident Command System Structure

Activities

- Meetings - 7:00 PM on the third Thursday of every even month
- Training Events
 - Working on events to be held on odd months
 - State-wide Simulated Emergency Test (SET) - October
- Public Service Events
 - 2022 CRANDIC Marathon in cooperation with Linn County ARES, CVARC, and ICARC. **THANK YOU!**
- Weekly Net Sundays at 8:30 PM on the Coralville Repeater

ARES & CERT



Questions?

For more information:

<https://jc-ares.org>

<https://arriowa.org>

Neil Johnson

NOSFH@arrl.net

319-540-2081



2022 CRANDIC Marathon