

A\_MT61



A\_PLUG\_1

CONNECTOR  
REQUIRED  
FOR THIS  
ASSEMBLY

A\_CONTACT\_1\_■

CONN  
CONT

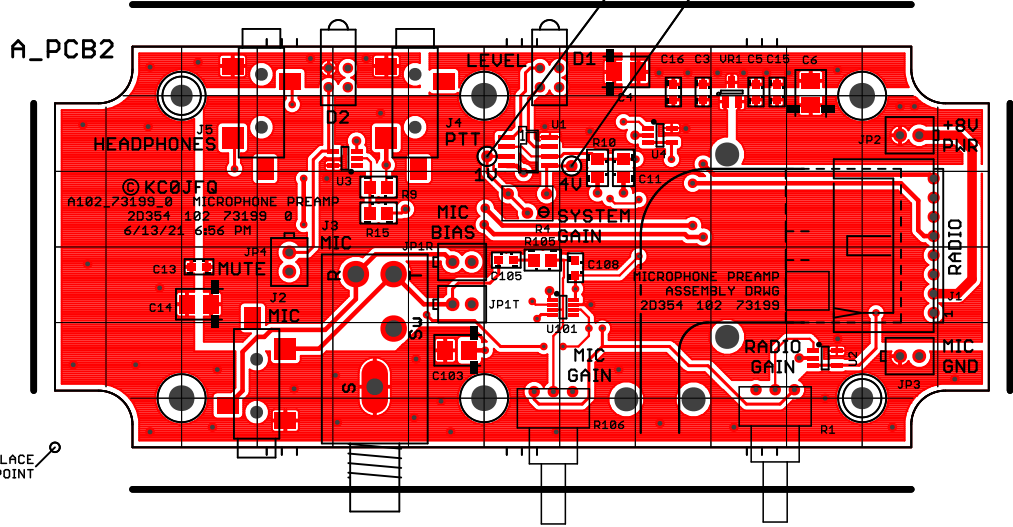
A_ENCL1
Mfg: HAMMOND
Len:
Wid:
Hgt:
ENCLOSURE

1.075 (0.0)    1.475 (0.0)    1.875 (0.0)    2.575 (0.0)

HEAD PHONES    PTT FOOT SWITCH    SYSTEM GAIN    1U TEST POINT    1U TEST POINT

TRANSMIT 5V RAIL

A\_PCB2



0.485  
(11.75)  
CLEAR ABOVE  
0.062 PCB

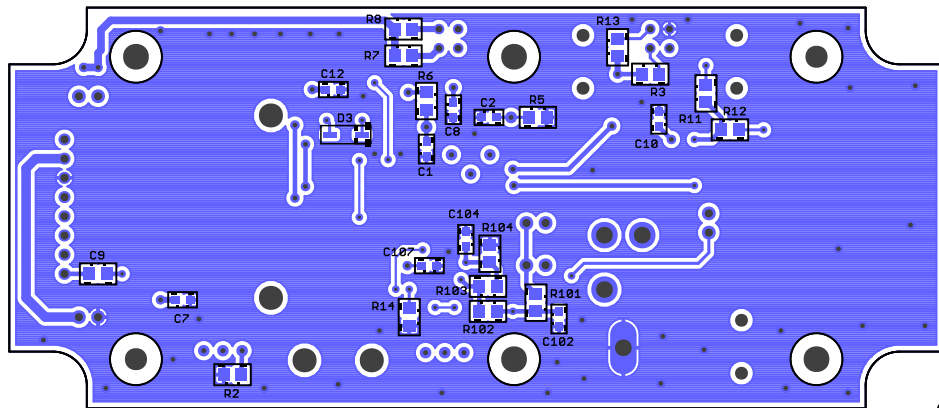
TOP MARKING INK 102\_73199\_0 .gto .GTO

TOP COPPER 102 102\_73199\_0 .gm01 .GTL

PICK&PLACE ZERO POINT

1.050 (0.0)    1.665 (0.0)    0.000 (0.0)    3.150 (0.0)    3.750 (0.0)

Drawn	KC0JFQ	Date	TITLE: MICROPHONE PREAMP					The University of Iowa Department of Physics & Astronomy Iowa City, IA, USA		
Designed	KC0JFQ	Date	PWA		Plot: 6/13/21 6:56 PM	Save: 6/13/21 6:55 PM	A102_73199_0			
Approval 1		Date	CAGE	Series	Ham Projects	LAYERS	Number	REV:		
			2D354	102		2	73199	0		



PICK&PLACE  
ZERO POINT

105 COPPER 105 105\_23199\_0 105\_23199\_0  
105 MARKING INK 105\_23199\_0 105\_23199\_0

<b>TITLE: MICROPHONE PREAMP</b> PWA		The University of Iowa Department of Physics & Astronomy Iowa City, IA, USA		
Date: 6/13/21 6:55 PM		A102_73199_0		
<b>CAGE</b> 2D354	<b>Series</b> 102	Ham Projects	<b>LAYERS</b> 2	<b>Number</b> 73199
				<b>REV:</b> 0