

PWA RELEASED AS 102-73156-5

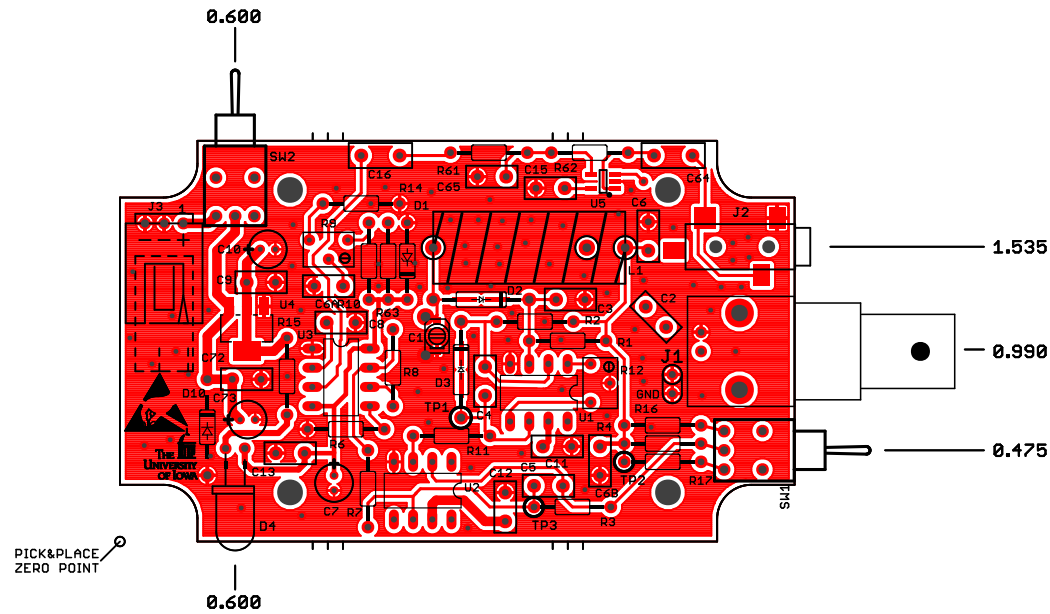
ASSEMBLE PER BOM 102_73156_5.DigiKey.csv
 PICK & PLACE FILE 102_73156_5.pck_plc.txt
 REFERENCE VIEW, TOP 102_73156_5_top.pdf
 REF. VIEW, BOTTOM 102_73156_5_bot.pdf

PADS ARE TYPICALLY OPTIMIZED FOR HAND
 SOLDERING. THERE WILL BE ADDITIONAL
 COPPER EXTENDING BEYOND THE END OF
 THE DEVICE. THIS ADDITIONAL PAD AREA
 PROVIDES CONTACT AREA FOR THE
 SOLDERING IRON TIP

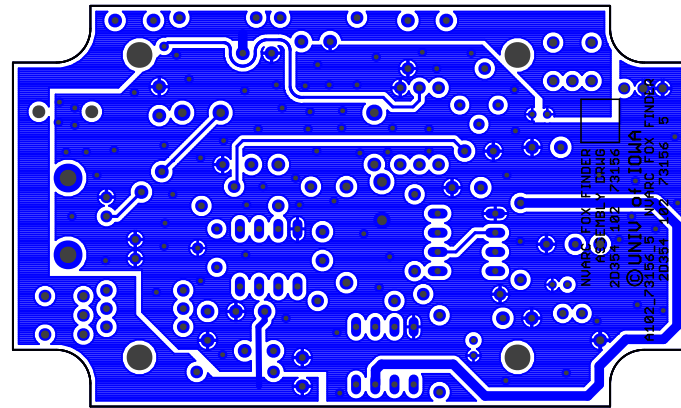
ENCL1
HAMMOND 5.120 2.560
ENCLOSURE

PCB1

TOP MARKING INK 102_73156_5.gto .6T0
 TOP COPPER 102 102_73156_5.gm01 .6TL



Drawn	W. ROBISON	Date	TITLE: NUARC FOX FINDER				The University of Iowa	
Designed	BOB REIF	Date	PWA		Department of Physics & Astronomy		Iowa City, IA, USA	
Approval 1		Date	Plot: 12/19/19 12:51 PM	Save: not saved!	A102_73156_5			
			CAGE	Series	JUICE/RIME	LAYERS	Number	REV:
			2D354	102		2	73156	5



PICK&PLACE
ZERO POINT

TOP MARKING INK 102_73156_2.dpo .tbo
 BOT COPPER 102 102_73156_2.dmp .tbr

TITLE: NUARC FOX FINDER		The University of Iowa		Department of Physics & Astronomy	
PWA		Iowa City, IA, USA		A102_73156_5	
Date: not saved!					
CAGE	Series	JUICE/RIME	LAYERS	Number	REV:
2D354	102		2	73156	5