

# PWB RELEASED AS 102-73161-27

FABRICATE TO IPC-6102D CLASS ~~IPC2~~

PARTS SUBSTITUTIONS TO BE PROCESSED THROUGH VENDOR SUPPLIED WEB INTERFACE

EXCELLON DRILL FILE  
102\_73161\_27drill .XLN

GERBER FILE STANDARDS INFORMATION  
UNITS INCHES  
TOOL UNITS INCHES  
COORDINATES ABSOLUTE  
NUMBER FORMAT 2.4

SURFACE FINISH HASL

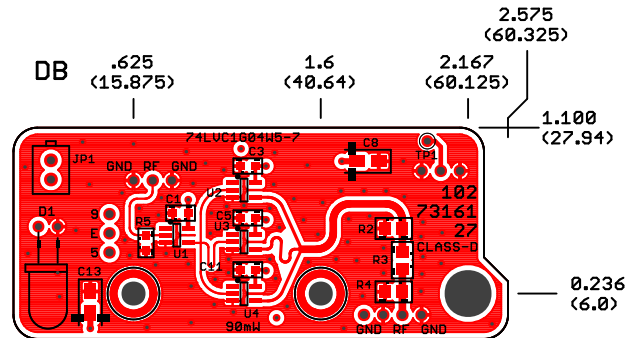
HOLE PLATING GUIDELINE  
HOLES WITH ANNULAR RING ARE TO BE PLATED  
HOLES WITHOUT AN ANNULAR RING ARE NOT TO BE PLATED

HOLE FILL GUIDELINE  
HOLES DRILLED 0.025" AND SMALLER ARE TO BE FILLED  
HOLES DRILLED 0.025" AND LARGER ARE NOT FILLED.  
NOMINAL BOARD THICKNESS IS 0.062 INCH UNLESS SPECIFIED DIFFERENTLY

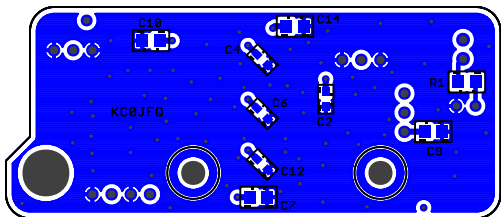
SPECIFIED BOARD THICKNESS

| LAYERING ORDER |                 |                       |
|----------------|-----------------|-----------------------|
| ITEM           | DESCRIPTION     | GERBER FILE           |
| 1              | TOP MARKING INK | 102_73161_27gto .GTO  |
| 2              | SOLDER MASK     | 102_73161_27gts .GTS  |
| 3              | TOP COPPER 10Z  | 102_73161_27gm01 .GTL |
| 4              | LAMINATE        |                       |
| 5              | COPPER 0.50Z    | 102_73161_27gm07 .G2L |
| 6              | LAMINATE        |                       |
| 7              | COPPER 0.50Z    | 102_73161_27gm08 .G3L |
| 8              | LAMINATE        |                       |
| 9              | COPPER 10Z      | 102_73161_27gm16 .GBL |
| 10             | SOLDER MASK     | 102_73161_27gbs .GBS  |
| 11             | MARKING INK     | 102_73161_27gbo .GBO  |

| HDR1                                 | HDR2                                 | HDR3                                 | HDR4                                 |
|--------------------------------------|--------------------------------------|--------------------------------------|--------------------------------------|
| CONNECTOR REQUIRED FOR THIS ASSEMBLY | CONNECTOR REQUIRED FOR THIS ASSEMBLY | CONNECTOR REQUIRED FOR THIS ASSEMBLY | CONNECTOR REQUIRED FOR THIS ASSEMBLY |



|            |        |      |                       |                  |                                   |        |                        |      |
|------------|--------|------|-----------------------|------------------|-----------------------------------|--------|------------------------|------|
| Drawn      | KC0JFQ | Date | TITLE: CLASS D AMP/3  |                  |                                   |        | The University of Iowa |      |
| Designed   | KC0JFQ | Date | PWB                   |                  | Department of Physics & Astronomy |        | Iowa City, IA, USA     |      |
| Approval 1 | KC0JFQ | Date | Plot: 1/29/20 9:23 AM | Save: not saved! | A102_73161_27                     |        |                        |      |
|            |        |      | CAGE                  | Series           | FOX TRANSMITTER                   | LAYERS | Number                 | REV: |
|            |        |      | 2D354                 | 102              |                                   | 4      | 73161                  | 27   |



BOT COPPER 102\_73161\_27  
 BOT MARKING INK 102\_73161\_27

|                                    |                      |   |                    |                        |
|------------------------------------|----------------------|---|--------------------|------------------------|
| <b>TITLE: CLASS D AMP/3</b><br>PWB |                      | The University of Iowa<br>Department of Physics & Astronomy<br>Iowa City, IA, USA |                    |                        |
| Date: not saved!                   |                      | A102_73161_27   |                    |                        |
| <b>CAGE</b><br>2D354               | <b>Series</b><br>102 | FOX TRANSMITTER   | <b>LAYERS</b><br>4 | <b>Number</b><br>73161 |
|                                    |                      |   |                    | <b>REV:</b><br>27      |

HDR1

HDR2

HDR3

HDR4

CONNECTOR  
REQUIRED  
FOR THIS  
ASSEMBLY

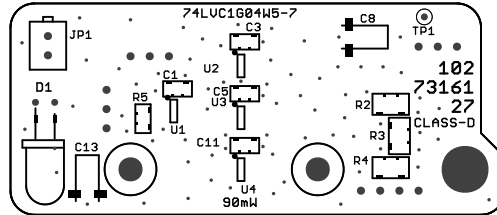
CONNECTOR  
REQUIRED  
FOR THIS  
ASSEMBLY

CONNECTOR  
REQUIRED  
FOR THIS  
ASSEMBLY

CONNECTOR  
REQUIRED  
FOR THIS  
ASSEMBLY

DB

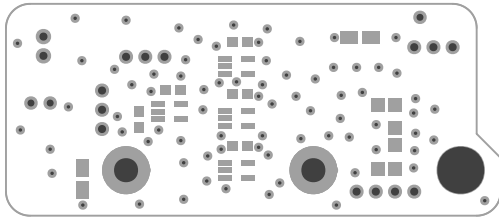
TOP MARKING INK 102\_73161\_27gto .GTO



TOP SOLDER MASK

102\_73161\_27gts

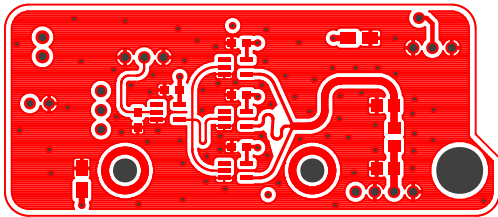
.GTS



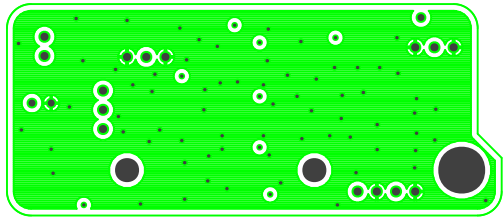
TOP COPPER 10Z

102\_73161\_27gm01

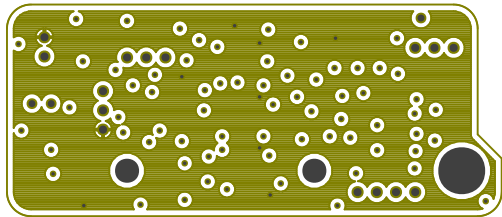
.GTL



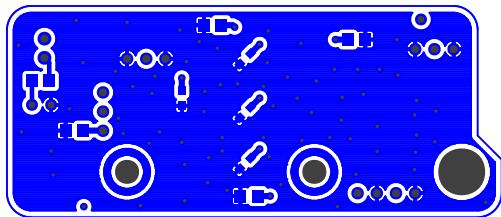
IN1 COPPER 0.50Z 102\_73161\_27gm07 .G2L



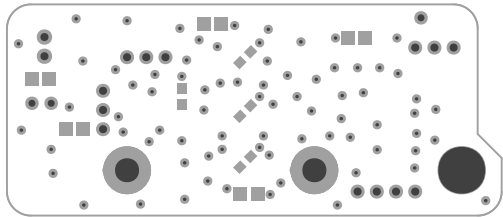
IN2 COPPER 0.50Z 102\_73161\_27gm08 .G3L



BOT COPPER 10Z 102\_73161\_27gm16 .GBL







BOT SOLDER MASK 102\_73161\_27gbs .GBS

